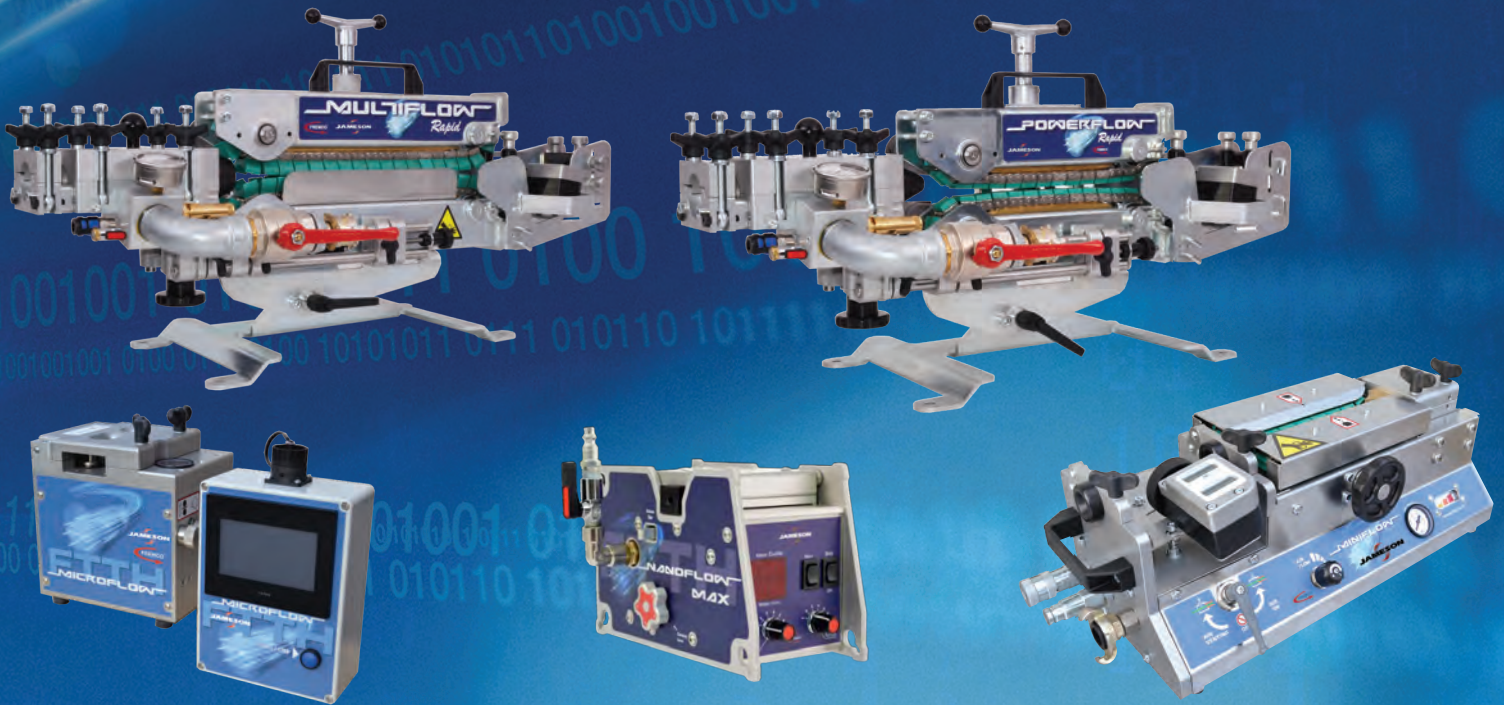




# FIBER BLOWING MACHINES CATALOG



WHEREVER THE JOB TAKES YOU,  
**COUNT ON JAMESON™**



# FIBER BLOWERS

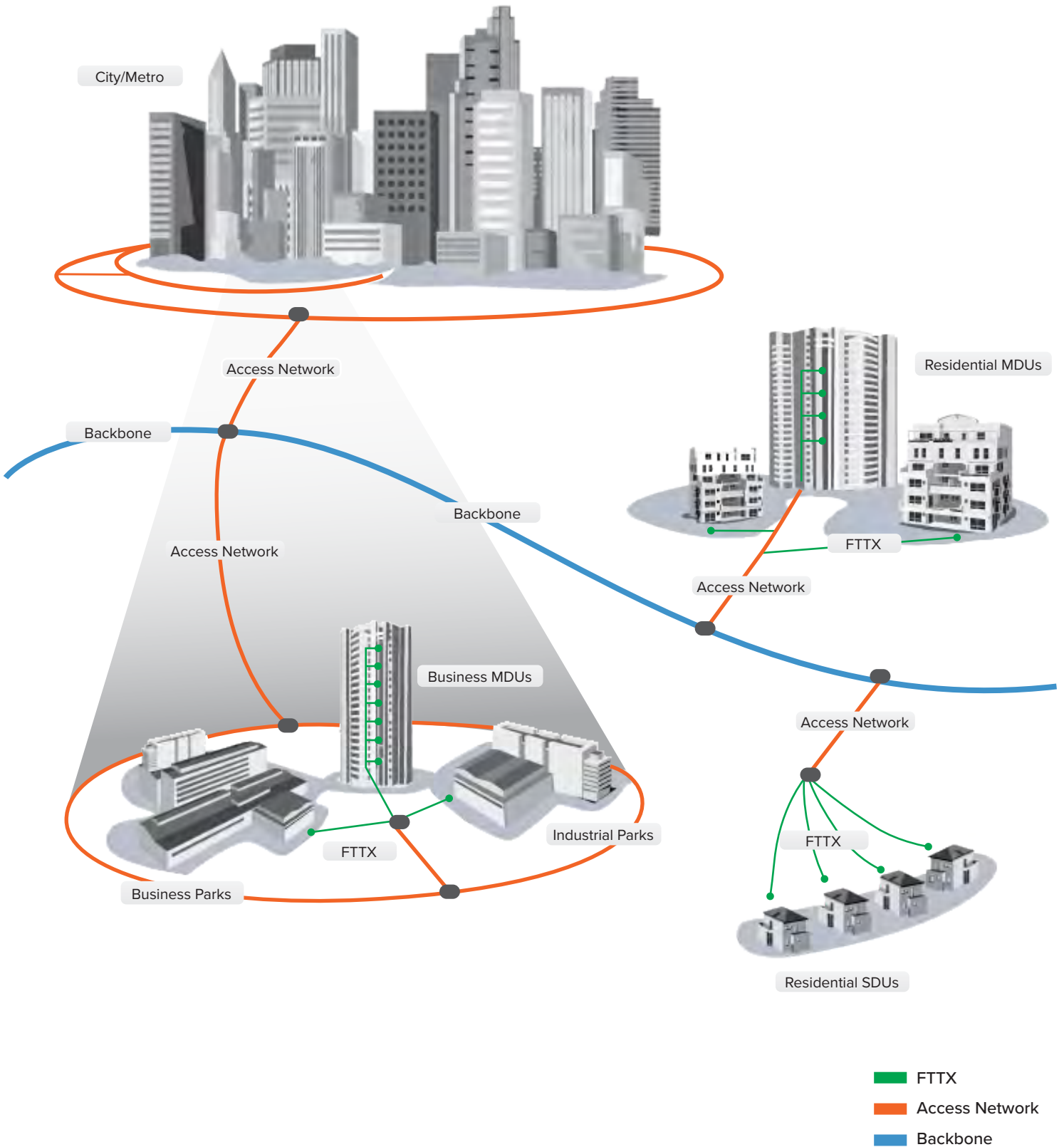
**ACCESS NETWORK -  
BACKBONE - FTTx**



Jameson offers the most advanced and reliable fiber blowing machines on the market. Featuring a complete line-up serving a broad array of inside and outside plant installations, Jameson is ready for your next backbone, access network, or FTTx fiber install.

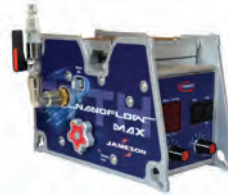
- Proven reliability and performance in the toughest environments
- Complete line of equipment covers broad range of inside and outside plant network installations
- Advanced protection technology prevents damage to fiber cable
- Hydraulic powered units provide superior pushing force and forward/reverse control
- Air-blown or water-assisted installation provides maximum versatility for larger cable and longer runs
- On-demand equipment inventory with U.S. based technical support and service center

## FIBER BLOWING APPLICATION ECOSYSTEM



# FIBER BLOWING MACHINES

## FIBER BLOWING OVERVIEW



	NanoFlow	NanoFlow MAX	MicroFlow TOUCH
Part Number	J101-190108001	J101-190911002	J101-180416003
Application	FTTx	FTTx	FTTx
Fiber Cable OD	0.8 - 3.0 mm .03 - .12 in	0.8 - 4.5 mm .03 - .17 in	0.8 - 6.5 mm .03 - .26 in
Duct OD	3.0 - 10 mm .12 - .39 in	3 - 12.7 mm .12 - .5 in	4 - 16 mm .16 - .63 in
Drive Power	24V Lithium-ion Battery	24V Lithium-ion Battery	110/230VAC
Install Speed (Up To)	490 ft/min (150 m/min)	410 ft/min (125 m/min)	295 ft/min (90 m/min)
Pushing Force	-	0 - 4.4 lb (0 - 2 kg)	-
Blowing Distance (Max.)	3,940 ft (1200 m)	3,940 ft (1200 m)	8,200 ft (2500 m)
Recommended Air Flow	7.1 cfm (200 l/min.)	7.1 - 14.1 cfm (200 - 400 l/min.)	7.1 - 17.7 cfm (200 - 500 l/min.)
Recommended Air Pressure	Max. 150 psi (Max. 10 bar)	Max.150 psi (Max. 10 bar)	120 - 230 psi (8 - 16 bar)
Dimensions L x W x H	8.0 x 4.0 x 5.5 in (212 x 104 x 139 mm)	8.0 x 4.0 x 5.5 in (212 x 104 x 139 mm)	Machine: 9.9 x 5.9 x 8.5 in (250 x 150 x 220 mm) Control Unit: 7.8 x 5.9 x 3.2 in (200 x 150 x 80 mm)
Weight	7.5 lb (3.4 kg) With Battery	7.5 lb (3.4 kg) With Battery	Machine: 23.1 lb (10.5 kg) Control Unit: 2.6 lb (1.2 kg)
Features	<ul style="list-style-type: none"> <li>· Fully Automatic</li> <li>· Double Fiber Protection</li> <li>· Easy Load &amp; Remove Pre-Connected Products</li> <li>· One person installation</li> <li>· Adjustable Torque &amp; Speed</li> <li>· No Tools Needed</li> <li>· Multi-Position</li> </ul>	<ul style="list-style-type: none"> <li>· Fully Automatic</li> <li>· Double Fiber Protection</li> <li>· Easy Load &amp; Remove Pre-Connected Products</li> <li>· One person installation</li> <li>· Adjustable Torque &amp; Speed</li> <li>· No Tools Needed</li> <li>· Multi-Position</li> </ul>	<ul style="list-style-type: none"> <li>· Preset Automatic Stop</li> <li>· Auto-Buckle Detection</li> <li>· Speed, Torque &amp; Distance Display</li> <li>· Adjustable Torque, Distance &amp; Speed</li> <li>· Air Pressure/Flow Regulation</li> </ul>

## FIBER BLOWING OVERVIEW



MiniFlow RAPID	PowerFlow RAPID	MultiFlow RAPID
J101-190108010	J101-41001	J101-41021
Access Network	Access Network / Backbone	Backbone
3 - 12 mm .12 - .47 in	5.5 - 25 mm .22 - .98 in	5.5 - 32 mm .22 - 1.26 in
7 - 20 mm .28 - .79 in	10 - 63 mm .39 - 2.5 in	10 - 63 mm .39 - 2.5 in
Hydraulic	Hydraulic	Hydraulic
325 ft/min (100 m/min)	260 ft/min (80 m/min)	260 ft/min (80 m/min)
0 - 88 lb (0 - 40 kg)	0 - 276 lb (0 - 125 kg)	0 - 441 lb (0 - 200 kg)
11,485 ft (3500 m)	16,404 ft (5000 m)	16,404 ft (5000 m)
35.3 cfm (1000 l/min.)	282.5 - 423.8 cfm (8000 - 12000 l/min.)	282.5 - 423.8 cfm (8000 - 12000 l/min.)
120 - 230 psi (8 - 16 bar)	Max. 230 psi (Max. 16 bar)	Max. 230 psi (Max. 16 bar)
25.6 x 8.9 x 8.3 in (650 x 225 x 210 mm)	37.4 x 15.7 x 19.7 in (950 x 400 x 500 mm)	41.3 x 15.7 x 19.7 in (1050 x 400 x 500 mm)
53.0 lb (24 kg)	99.0 lb (45 kg)	112.4 lb (51 kg)
<ul style="list-style-type: none"> <li>· Push Force Monitor</li> <li>· Quickly Adapts to Various Cable &amp; Duct Sizes</li> <li>· No Tools Needed</li> <li>· Adjustable Torque, Distance &amp; Speed</li> <li>· Use with Air or Water</li> </ul>	<ul style="list-style-type: none"> <li>· Single Cable Only</li> <li>· Quickly Adapts to Various Cable &amp; Duct Sizes</li> <li>· No Tools Needed</li> <li>· Adjustable Torque, Distance &amp; Speed</li> <li>· Use with Air or Water</li> </ul>	<ul style="list-style-type: none"> <li>· Relining or Single Cable</li> <li>· Quickly Adapts To Various Duct &amp; Cable Sizes</li> <li>· No Tools Needed</li> <li>· Adjustable Torque, Distance &amp; Speed</li> <li>· Use with Air or Water</li> </ul>

# FIBER BLOWING MACHINES

## NANOFLOW™

**EXTREME PORTABILITY & CABLE PROTECTION**  
**PLUS Battery Powered Convenience**

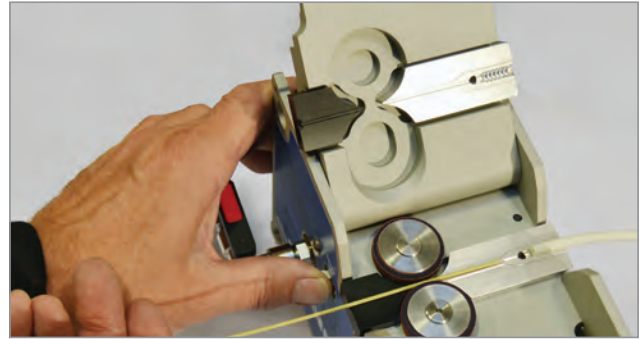


Efficient and automatic FTTx installation. Fast, easy one-person set-up and operation using six adjustable speed settings and torque settings.

- Compatible with pre-connected cable; load/unload without cutting
- Fully automatic with unique double fiber protection
- Battery-powered (24V Li-Ion)
- Quickly load fiber and duct – no tools needed
- One-person set-up and operation

Advanced fiber protection technology stops installation to prevent fiber damage. Synchronous drive wheels interrupt fiber installation due to incorrect torque selection. The machine also stops automatically if installation exceeds preset torque load on fiber.

These features, combined with an end-of-line “Fiberstop” attachment, allow efficient one-person FTTx installation. Once the fiber reaches customer, the system immediately stops installation without damage to fiber.



### AVAILABLE MACHINE CONFIGURATION

Part Number	NanoFlow	Adjustable Air Valve	Adapter Plate Sets	Duct Adapters	Lithium-Ion Batteries w/Charger	Storage Case
J101-190108001	✓	✓	2.2 - 2.3 mm 3.0 - 3.1 mm	3.0 mm, 5.0 mm, 7.0 mm, 8.0 mm, 8.5mm, 10.0 mm	Two 24V/2.0Ah (110/230VAC)	✓

- Bright LED display shows Speed, Distance, Fiber Protection and Low-Battery
- Portable, compact design allows multiple blowing positions
- Integral air fitting allows fiber installation with or without air
- Anodized aluminum construction is lightweight and durable

#### Additional Equipment Needed To Run Machine:

- High Pressure Air Compressor

Specifications	
Cable diameter	0.8 - 3 mm
Duct diameter	3 - 10 mm
Blowing distance	Up to 3940 ft. (1200 m)
Blowing speed	Up to 490 ft./min (150 m/min)
Recommended pressure and airflow	Max. 10 bar (150 psi) Max. 200 L/min (7.1 cfm)
Weight (with battery)	7.5 lb (3.4 kg)
Dimensions L x W x H	8.3 x 4.1 x 5.5 in. (212 x 104 x 139 mm)

## NANOFLOW™ MAX

**LARGER FIBER AND DUCT CAPACITY WITH CLAMPING FORCE ADJUSTMENT KNOB PLUS extra drive wheel included**

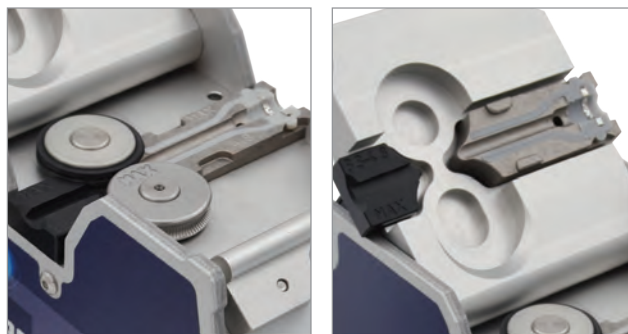


Efficient and automatic FTTx installation. Fast, easy one-person set-up and operation using six adjustable speed settings and torque settings.

- Compatible with pre-connected cable; load/unload without cutting
- Fully automatic with unique double fiber protection
- Battery-powered (24V Li-Ion)
- Quickly load fiber and duct – no tools needed
- One-person set-up and operation

Advanced fiber protection technology stops installation to prevent fiber damage. Synchronous drive wheels interrupt fiber installation due to incorrect torque selection. The machine also stops automatically if installation exceeds preset torque load on fiber.

These features, combined with an end-of-line “Fiberstop” attachment, allow efficient one-person FTTx installation. Once the fiber reaches the customer, the system immediately stops installation without damage to fiber.



### AVAILABLE MACHINE CONFIGURATION

Part Number	NanoFlow MAX	Adjustable Air Valve	Air Filter w/ Water Separator	Adapter Plate Set	Duct Adapters	Two Drive Wheels for Fiber	Storage Case	Lithium-Ion Batteries w/Charger
J101-190911002	✓	✓	✓	4.4 - 4.5 mm	3.0 mm, 5.0 mm, 7.0 mm, 8.0 mm, 8.5mm, 10.0 mm, 12.0 mm, 12.7 mm	0.8 - 3.0 mm (rubber) 3.0 - 4.5 mm (steel)	✓	Two 24V/2.0Ah (110/230VAC)

- Bright LED display shows Speed, Distance, Fiber Protection and Low-Battery
- Portable, compact design allows multiple blowing positions
- Integral air fitting allows fiber installation with or without air
- Anodized aluminium construction is lightweight and durable

### Additional Equipment Needed To Run Machine:

- High Pressure Air Compressor

Specifications	
Cable diameter	0.8 - 4.5 mm
Duct diameter	3 - 12.7 mm
Blowing distance	Up to 3940 ft. (1200 m)
Blowing speed	Up to 410 ft./min (125 m/min)
Recommended pressure and airflow	Max. 10 bar (150 psi) Max. 200 L/min (7.1 cfm)
Weight (with battery)	7.5 lb (3.4 kg)
Dimensions L x W x H	8.3 x 4.1 x 5.5 in. (212 x 104 x 139 mm)

# FIBER BLOWING MACHINES

## NANOFLOW/NANOFLOW MAX - PARTS

NOTE: Do not use NanoFlow MAX adapter plates or steel drive wheel with original NanoFlow. This can cause machine to malfunction. NanoFlow MAX parts are engraved with "MAX".

NanoFlow/NanoFlow MAX Adapter Sets		
Part Number	Inlet Diameter	Fiber Diameter
J103-160601301	1.1 mm	Up to 1.0 mm
J103-160601303	1.3 mm	1.1 - 1.2 mm
J103-160601304	1.4 mm	1.2 - 1.3 mm
J103-160601306	1.6 mm	1.4 - 1.5 mm
J103-160601308	1.8 mm	1.6 - 1.7 mm
J103-160601311	2.1 mm	1.9 - 2.0 mm
J103-160601314	2.4 mm	2.2 - 2.3 mm
J103-160601316	2.6 mm	2.4 - 2.5 mm
J103-160601318	3.0 mm	2.8 - 2.9 mm
J103-160601319	3.2 mm	2.0 - 3.0 mm

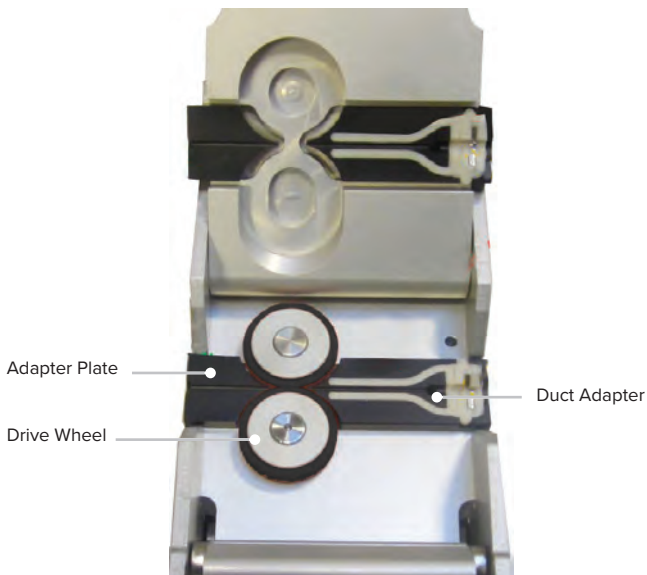
NanoFlow MAX Only Adapter Plate Sets		
Part Number	Inlet Diameter	Fiber Diameter
J103-190923050	3.3 mm	2.9 - 3.1 mm
J103-190923051	3.8 mm	3.4 - 3.6 mm
J103-190923052	4.1 mm	3.7 - 3.9 mm
J103-190923053	4.3 mm	3.9 - 4.1 mm
J103-190923054	4.8 mm	4.4 - 4.5 mm

Custom Adapter Plates Available Upon Request

NanoFlow/NanoFlow MAX Gasket/Duct Adapter Sets	
Part Number	Duct O.D.
J103-160601130	3 mm
J103-160601132	5 mm
J103-160601133	7 mm
J103-160601135	8 mm
J103-180516003	8.5 mm
J103-160601134	10 mm

NanoFlow MAX Only Gasket/Duct Adapter Sets	
Part Number	Duct O.D.
J103-190923040	12 mm
J103-190923041	12.7 mm

Custom Gasket/Duct Adapters (Available Upon Request)



NanoFlows Include plastic storage case to protect machine and organize parts.



# FIBER BLOWING MACHINES

## NANOFLOW/NANOFLOW MAX - ACCESSORIES



Tripod



Shoulder Strap



Reel Holder Arm



Steel Drive Wheel



Air Filter & Water Separator



Battery



Fiberstop



Return Valve



Flowmeter

### Accessories

J103-161127005	Tripod with Quick-Mount Adapter
J103-160601074	Shoulder Strap
J103-171020001	Reel Holder Arm for Preconnected Fiber with 25mm Center Hole
J103-190923035	Max Steel Drive Wheel (3.0 - 4.5 mm Fiber)
J103-170515001	Knurled Steel Drive Wheel (for Microcables Only) (0.8 - 3.0 mm)
J103-170515002	Standard Drive Wheel (0.8 - 3.0 mm Fiber)
J103-160601036	Replacement Rubber Ring for Standard Drive Wheel

### Air Filter & Water Separator - Removes oil and water when using compressor

J103-160601064	Air Filter & Water Separator
----------------	------------------------------

### Batteries & Charger

J103-160601042	24V/2.0Ah Lithium-Ion Battery
J103-160601043	24V/4.0Ah Lithium-Ion Battery
J103-160601044	Battery Charger (110/230VAC)

### Fiberstop - Attach at far end of microduct. Works with machine's fiber protection system to automatically stop fiber at end of duct run; allowing one-person fiber installation

J103-20601	Fiberstop - 5.0 mm Duct O.D.
J103-150713001	Fiberstop - 8.0 mm Duct O.D.
J103-20602	Fiberstop - 10.0 mm Duct O.D.
J103-150713002	Fiberstop - 12.0 mm Duct O.D.

### Return Valve - Use to remove damaged fiber from microduct. Attach valve at far end of microduct, connect compressed air source, open valve to assist fiber removal

J103-20603	Return Valve - 5.0 mm Duct O.D.
J103-20606	Return Valve - 8.0 mm Duct O.D.
J103-20604	Return Valve - 10.0 mm Duct O.D.
J103-20605	Return Valve - 12.0 mm Duct O.D.

### Flowmeter - Test airflow output from microduct

J103-20600	Flowmeter for 5.0 mm Duct O.D. (6-30 L/min.)
------------	--

## MICROFLOW TOUCH

AC POWERED WITH CABLE PROTECTION



The MicroFlow TOUCH incorporates a unique fiber protection technology that automatically stops the machine and prevents costly damage to fiber optic cable during installation.

As the cable encounters an obstruction, it bends slightly in the machine, triggering an integral stop sensor. Exceeding the preset motor torque limit also interrupts the installation process. In either case, the machine automatically protects fiber from possible damage.

After the fiber protection technology is triggered, the MicroFlow will attempt installation two more times before completely disengaging the machine.

### CONTROL UNIT

The MicroFlow TOUCH control unit features a user-friendly touch-screen display for easy set-up and control of entire blowing process.

- Easily adjust maximum motor torque and speed
- Preset specific fiber blowing distance
- Control Acceleration (start to maximum speed) and Deceleration (maximum speed to stop)
- Displays critical information during blowing process:  
Actual Motor Torque, Actual Motor Speed and Distance Counter



Fiber Protection Technology

### AVAILABLE MACHINE CONFIGURATION

Part Number	MicroFlow TOUCH (110/230VAC)	Touch-Screen Control Unit	Storage Case
J101-180416003	✓	✓	✓
(Order Adapter/Drive Wheel Sets and Gaskets Separately)			

### Specifications

Application	FTTx, inside plant, building interconnects
Fiber/Cable (OD)	0.8 - 6.5 mm
Microduct Diameter (OD)	4 - 16 mm
Input Voltage	110/240 V, 50 - 60 Hz
Install Speed (Max.)	295 ft/min (90 m/min)
Blowing Distance (Max.)	8,200 ft. (2500m)
Recommended Air Flow	71 - 177 cfm (200 - 500 l/min.)
Recommended Air Pressure	120 - 230 psi (8 - 16 bar)
Dimensions L x W x H	<b>Machine:</b> 9.9 x 5.9 x 8.5 in (250 x 150 x 220 mm) <b>Control Unit:</b> 7.8 x 5.9 x 3.2 in (200 x 150 x 80 mm)
Weight	<b>Machine:</b> 25.80 lb (11.7 kg) <b>Control Unit:</b> 4.2 lb (1.9 kg)

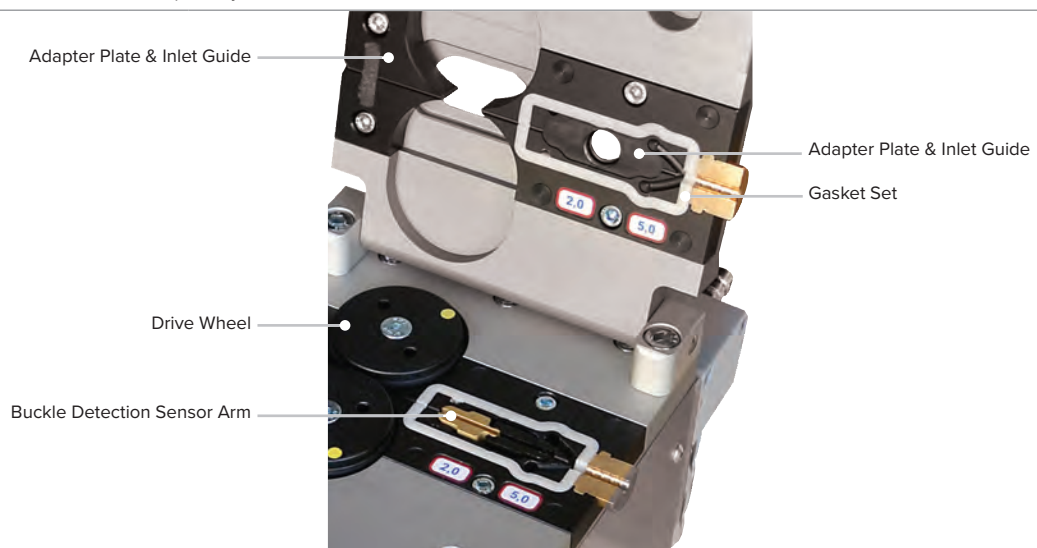
Additional Equipment Needed To Run Machine: High Pressure Air Compressor

MicroFlow TOUCH Adapter Plate/Drive Wheel Sets (WITH SENSOR ARM)*			
Part Number	Inlet Diameter	Fiber Diameter	Duct O.D.
J103-130808001	1.5 mm	0.8 - 1.3 mm	5 mm
J103-130808010	2.0 mm	1.2 - 1.8 mm	
J103-130808020	3.0 mm	1.9 - 2.8 mm	
J103-130808002	1.5 mm	0.8 - 1.3 mm	7 mm
J103-130808011	2.0 mm	1.2 - 1.8 mm	
J103-130808021	3.0 mm	1.9 - 2.8 mm	
J103-130808003	1.5 mm	0.8 - 1.3 mm	8 mm
J103-130808012	2.0 mm	1.2 - 1.8 mm	
J103-130808022	3.0 mm	1.9 - 2.8 mm	
J103-130808004	1.5 mm	0.8 - 1.3 mm	10 mm
J103-130808013	2.0 mm	1.2 - 1.8 mm	
J103-130808023	3.0 mm	1.9 - 2.8 mm	
J103-130808005	1.5 mm	0.8 - 1.3 mm	12 mm
J103-130808014	2.0 mm	1.2 - 1.8 mm	
J103-130808024	3.0 mm	1.9 - 2.8 mm	
J103-14118002	2.0 mm	1.2 - 1.8 mm	14 mm
J103-130808025	3.0 mm	1.9 - 2.8 mm	

MicroFlow TOUCH Adapter Plate/Drive Wheel Sets (WITHOUT SENSOR ARM)*			
J103-130808040	4.0 mm	2.8 - 3.8 mm	7 mm
J103-14113003	5.0 mm	3.8 - 4.8 mm	
J103-130808041	4.0 mm	2.8 - 3.8 mm	8 mm
J103-181203002	4.0 mm	2.8 - 3.8 mm	8.5 mm
J103-150727001	4.0 mm	2.8 - 3.8 mm	10 mm
J103-130701002	5.0 mm	3.8 - 4.8 mm	
J103-130808043	4.0 mm	2.8 - 3.8 mm	12 mm
J103-140827005	5.0 mm	3.8 - 4.8 mm	
J103-181017001	6.8 mm	4.8 - 6.5 mm	12.7 mm
J103-190111001	4.0 mm	2.8 - 3.8 mm	
J103-110420001	6.8 mm	4.8 - 6.5 mm	14 mm
J103-130808044	4.0 mm	2.8 - 3.8 mm	
J103-140827004	5.0 mm	3.8 - 4.8 mm	16 mm
J103-181017002	6.8 mm	4.8 - 6.5 mm	
J103-130808045	4.0 mm	2.8 - 3.8 mm	16 mm
J103-140827006	5.0 mm	3.8 - 4.8 mm	
J103-181017003	6.8 mm	4.8 - 6.5 mm	

Custom Adapter Plates Available Upon Request

\* MicroFlow TOUCH Gaskets Must Be Ordered Separately



# FIBER BLOWING MACHINES

## MICROFLOW TOUCH - PARTS

Note: Gasket diameter should fit close to fiber OD

Part Number	Gasket Dia.	Duct O.D.
J103-130724001	0.8 mm	5 mm
J103-130724002	1.0 mm	
J103-130724003	1.2 mm	
J103-130724004	1.4 mm	
J103-130724005	1.6 mm	
J103-131217005	1.8 mm	
J103-131217006	2.0 mm	
J103-141113001	2.2 mm	
J103-170321001	2.4 mm	
J103-170524001	2.6 mm	
J103-161215003	0.8 mm	7 mm
J103-131127001	1.2 mm	
J103-170428001	1.4 mm	
J103-131208001	1.6 mm	
J103-131127002	1.8 mm	
J103-150309001	2.0 mm	
J103-131011001	2.2 mm	
J103-131011002	2.4 mm	
J103-131011003	2.6 mm	
J103-141118004	2.8 mm	
J103-151111001	3.0 mm	
J103-140107001	3.4 mm	
J103-150910001	3.6 mm	
J103-150503001	4.0 mm	
J103-141113002	4.2 mm	
J103-131217007	1.0 mm	8 mm
J103-130724006	1.2 mm	
J103-131217003	1.4 mm	
J103-131217004	1.6 mm	
J103-131217001	1.8 mm	
J103-131217002	2.0 mm	
J103-131212001	2.6 mm	
J103-170615002	3.6 mm	
J103-160429001	5.2 mm	
J103-201003002	3.0 mm	
J103-181203001	3.6 mm	
J103-190130003	3.8 mm	
J103-190130004	4.0 mm	
J103-190130001	4.6 mm	
J103-190130002	4.8 mm	

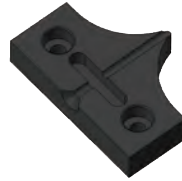
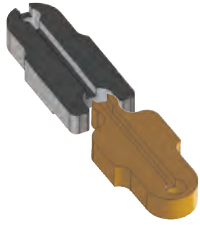
Part Number	Gasket Dia.	Duct O.D.
J103-141110001	1.2 mm	10 mm
J103-140819002	1.6 mm	
J103-140507001	1.8 mm	
J103-131127003	2.2 mm	
J103-130724007	2.4 mm	
J103-130724008	2.6 mm	
J103-150108002	3.0 mm	
J103-130701003	3.2 mm	
J103-130701004	3.4 mm	
J103-130701005	3.6 mm	
J103-140819003	3.8 mm	
J103-151111002	4.0 mm	
J103-150410001	4.6 mm	
J103-160118001	5.0 mm	
J103-150603001	5.4 mm	
J103-161012001	1.2 mm	12 mm
J103-170123001	1.4 mm	
J103-150421001	1.8 mm	
J103-150507001	2.2 mm	
J103-130724009	2.4 mm	
J103-140518001	2.6 mm	
J103-140518002	2.8 mm	
J103-150616001	3.0 mm	
J103-130724010	3.2 mm	
J103-130724011	3.4 mm	
J103-150507002	3.6 mm	
J103-140819004	3.8 mm	
J103-141104001	4.0 mm	
J103-141104004	4.2 mm	
J103-141104003	4.4 mm	
J103-141104002	4.6 mm	
J103-150618001	5.0 mm	
J103-170920001	5.2 mm	
J103-181017010	5.4 mm	
J103-181017011	5.6 mm	
J103-181017012	5.8 mm	
J103-181017013	6.0 mm	
J103-181017014	6.2 mm	
J103-181017015	6.4 mm	
J103-181017016	6.5 mm	
J103-190111002	3.0 mm	12.7 mm
J103-200603003	5.4 mm	

Part Number	Gasket Dia.	Duct O.D.
J103-141118003	1.8 mm	14 mm
J103-131007001	2.2 mm	
J103-131007002	2.6 mm	
J103-141118005	2.8 mm	
J103-131007003	3.2 mm	
J103-140820010	3.4 mm	
J103-140820008	3.8 mm	
J103-170523001	4.0 mm	
J103-150629001	4.2 mm	
J103-170615001	4.6 mm	
J103-181017017	5.0 mm	
J103-170523002	5.2 mm	
J103-181017018	5.4 mm	
J103-181017019	5.6 mm	
J103-181017020	5.8 mm	
J103-181017021	6.0 mm	
J103-181017022	6.2 mm	
J103-181017023	6.4 mm	
J103-181017024	6.5 mm	
J103-150902001	2.0 mm	16 mm
J103-161101001	2.6 mm	
J103-140820011	3.4 mm	
J103-140820009	3.8 mm	
J103-160831002	4.0 mm	
J103-181017025	5.0 mm	
J103-160831001	5.2 mm	
J103-170919001	5.4 mm	
J103-181017026	5.6 mm	
J103-181017027	5.8 mm	
J103-181017028	6.0 mm	
J103-181017029	6.2 mm	
J103-181017030	6.4 mm	
J103-181017031	6.5 mm	



# FIBER BLOWING MACHINES

## MICROFLOW TOUCH - ACCESSORIES



**Buckle Detection Sensor Arm**

**Sensor Arm Blocker**

**Nylon Inlet Guide**

**Drive Wheel**

**O-Ring For Drive Wheel**



**Filter & Water Separator**

**Return Valve**

**Fiberstop**

**Flowmeter**

**Vent Valve**

### Buckle Detection Sensor Arm

J103-171114001	Sensor Arm - 1.5 mm
J103-171114002	Sensor Arm - 2.0 mm
J103-171114003	Sensor Arm - 3.0 mm
J103-171114004	Sensor Arm - 4.0 mm

### Sensor Arm Blocker

J103-121004001	Sensor Arm Blocker - 2.0 mm
J103-130224001	Sensor Arm Blocker - 3.0 mm

### Nylon Inlet Guides

J103-10512	Nylon Inlet Guide - 2.0 mm
J103-10513	Nylon Inlet Guide - 3.0 mm
J103-10514	Nylon Inlet Guide - 4.0 mm
J103-10515	Nylon Inlet Guide - 5.0 mm
J103-10516	Nylon Inlet Guide - 6.0 mm
J103-180625001	Nylon Inlet Guide Replacement Foam

### Drive Wheels & O-Rings

J103-10522	Drive Wheel - Up to 2.0 mm Fiber O.D.
J103-10523	Drive Wheel - Up to 3.0 mm Fiber O.D.
J103-10525	Drive Wheel - Up to 6.0 mm Fiber O.D.
J103-10729	O-ring for Drive Wheel - Up to 2.0 mm Fiber O.D.
J103-120828001	O-ring for Drive Wheel - Up to 2.5 mm Fiber O.D.
J103-10730	O-ring for Drive Wheel - Up to 3.0 mm Fiber O.D.
J103-120207001	O-ring for Drive Wheel - Up to 6.0 mm Fiber O.D.

### Air Filter & Water Separator - Removes oil and water when using compressor

J103-130606001	Air Filter & Water Separator
----------------	------------------------------

### Fiberstop - Attach at far end of microduct. Works with machine's fiber protection system to automatically stop fiber at end of duct run, allowing one-person fiber installation.

J103-20601	Fiberstop - 5.0 mm Duct O.D.
J103-150713001	Fiberstop - 8.0 mm Duct O.D.
J103-20602	Fiberstop - 10.0 mm Duct O.D.
J103-150713002	Fiberstop - 12.0 mm Duct O.D.

### Return Valve - Use to remove damaged fiber from microduct. Attach valve at far end of microduct, connect compressed air source, open valve to assist fiber removal.

J103-20603	Return Valve - 5.0 mm Duct O.D.
J103-20606	Return Valve - 8.0 mm Duct O.D.
J103-20604	Return Valve - 10.0 mm Duct O.D.
J103-20605	Return Valve - 12.0 mm Duct O.D.

### Flowmeter - Test airflow output from microduct

J103-20600	Flowmeter for 5.0 mm Duct O.D. (6-30 L/min.)
------------	--

### Vent Valve - Used to decompress microduct without opening machine.

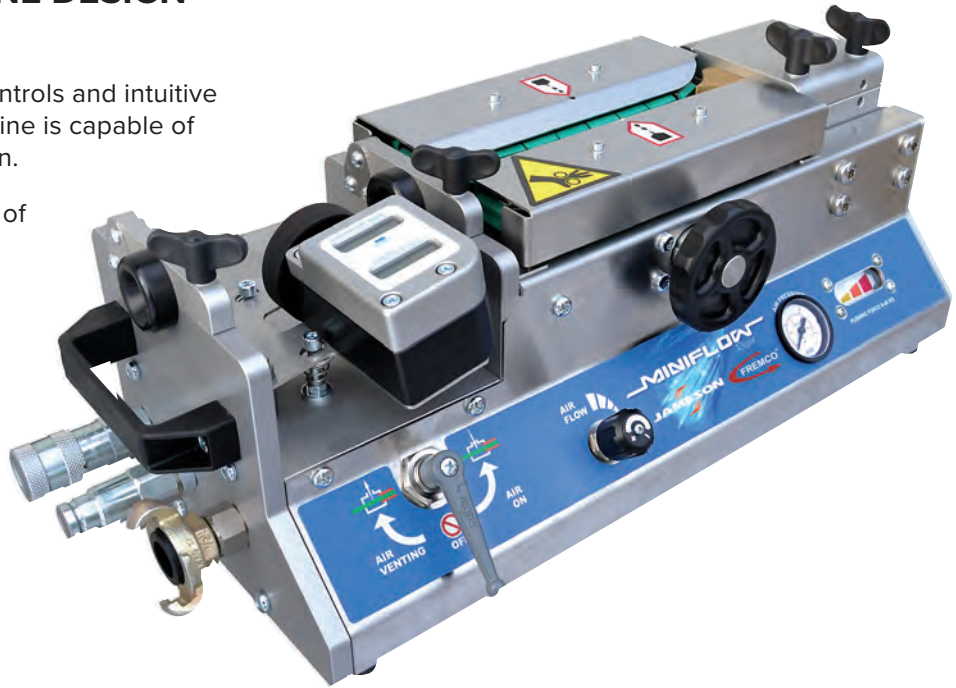
J103-140324003	Vent Valve for MicroFlow
----------------	--------------------------

## MINIFLOW RAPID

### RUGGED, COMPACT MACHINE DESIGN PLUS Integral Force Gauge

MiniFlow RAPID features user friendly controls and intuitive machine operation. In addition, the machine is capable of installing cable at speeds up to 325 ft/min.

- Straightforward design provides ease of operation
- Built-In digital footage counter and speedometer
- Machine quickly adapts to different size cable and duct
- Robust construction utilizing stainless steel and anodized aluminum



#### AVAILABLE MACHINE CONFIGURATIONS

Part Number	MiniFlow RAPID 4.0 - 12.0 mm Fiber O.D.	MiniFlow RAPID 3.0 - 8.0 mm Fiber O.D.	Cable Seal Kit	Control Valve w/Man. Return	Hydraulic Hose Set (5 m)	Aluminum Storage Case	Hydraulic Power Pack (gas)
J101-MIF-KIT1	✓		✓	✓	✓	✓	✓
J101-MIF-KIT2	✓		✓	✓	✓		
J101-MIF-KIT3	✓		✓	✓	✓	✓	
J101-190108010	✓						
J101-190108020		✓					

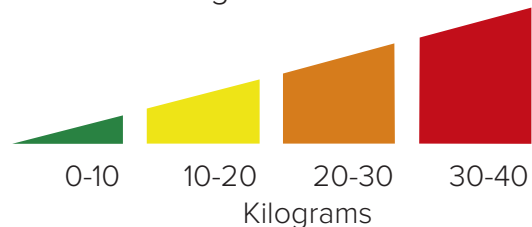
Specifications	
Application	Access Network
Fiber/Cable (OD)	3 - 12 mm
Duct Diameter (OD)	7 - 20 mm
Drive Power	Hydraulic
Install Speed (Max.)	325 ft/min (100 m/min)
Pushing Force	0 - 88 lb (0 - 40 kg)
Blowing Distance (Max.)	11,485 ft (3500 m)
Recommended Air Flow	35.3 cfm (1000 l/min)
Recommended Pressure	120 - 230 psi (8 - 16 bar air)
Dimensions: L x W x H	25.6 x 8.9 x 8.3 in (650 x 225 x 210 mm)
Weight	53.0 lb (24 kg)

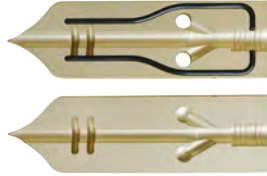
#### Additional Equipment Needed To Run Machine:

- Hydraulic Power Pack & Control Valve
- High Pressure Air Compressor

**Cable Damage Prevention** MiniFlow RAPID features an integral force gauge to continually monitor cable pushing force, allowing the operator to adjust settings or stop installation before damaging cable.

#### Pushing Force Indicator





Adapter Set

Adapter Plates

Nylon Inlet Guides

### MiniFlow RAPID Adapter Sets (Adapter Plates & Two Inlet Guide Sets)

Part Number	Inlet Dia.	Fiber Dia.	Duct O.D.
J103-141112001	7.0 mm	5.0 - 6.0 mm	10 mm
J103-141112004	8.0 mm	6.0 - 7.0 mm	
J103-141112002	7.0 mm	5.0 - 6.0 mm	12 mm
J103-141112005	8.0 mm	6.0 - 7.0 mm	
J103-161201001	9.0 mm	7.0 - 8.0 mm	12.7 mm
J103-141112013	8.0 mm	6.0 x 7.0 mm	14 mm
J103-141112003	7.0 mm	5.0 - 6.0 mm	
J103-141112006	8.0 mm	6.0 - 7.0 mm	
J103-141112007	9.0 mm	7.0 - 8.0 mm	
J103-141112008	10.0 mm	8.0 - 9.0 mm	
J103-141112010	11.0 mm	9.0 - 10.0 mm	
J103-141112009	10.0 mm	8.0 - 9.0 mm	16 mm
J103-141112011	11.0 mm	9.0 - 10.0 mm	
J103-190326004	8.5 x 5.5 mm	8.0 x 4.5 mm (Flat Drop)	16 mm
J103-180906001	13.0 mm	10.0 - 12.0 mm	18 mm
J103-141112012	13.0 mm	10.0 - 12.0 mm	20 mm

### MiniFlow RAPID Adapter Plates (1 Set)

Part Number	Inlet Dia.	Fiber Dia.	Duct O.D.
J103-120323001	7.0 mm	5.0 - 6.0 mm	10 mm
J103-120918001	8.0 mm	6.0 - 7.0 mm	
J103-12500	7.0 mm	5.0 - 6.0 mm	12 mm
J103-120201002	8.0 mm	6.0 - 7.0 mm	
J103-120221002	9.0 mm	7.0 - 8.0 mm	14 mm
J103-140612001	7.0 mm	5.0 - 6.0 mm	
J103-120201003	8.0 mm	6.0 - 7.0 mm	
J103-120702002	9.0 mm	7.0 - 8.0 mm	
J103-121024001	10.0 mm	8.0 - 9.0 mm	16 mm
J103-130213005	11.0 mm	9.0 - 10.0 mm	
J103-120118001	10.0 mm	8.0 - 9.0 mm	
J103-121127003	11.0 mm	9.0 - 10.0 mm	18 mm
J103-190326001	8.5 x 5.5 mm	8.0 x 4.5 mm (Flat Drop)	
J103-121127004	13.0 mm	10.0 - 12.0 mm	18 mm
J103-121203002	13.0 mm	10.0 - 12.0 mm	20 mm

Custom Adapter Plates Available Upon Request

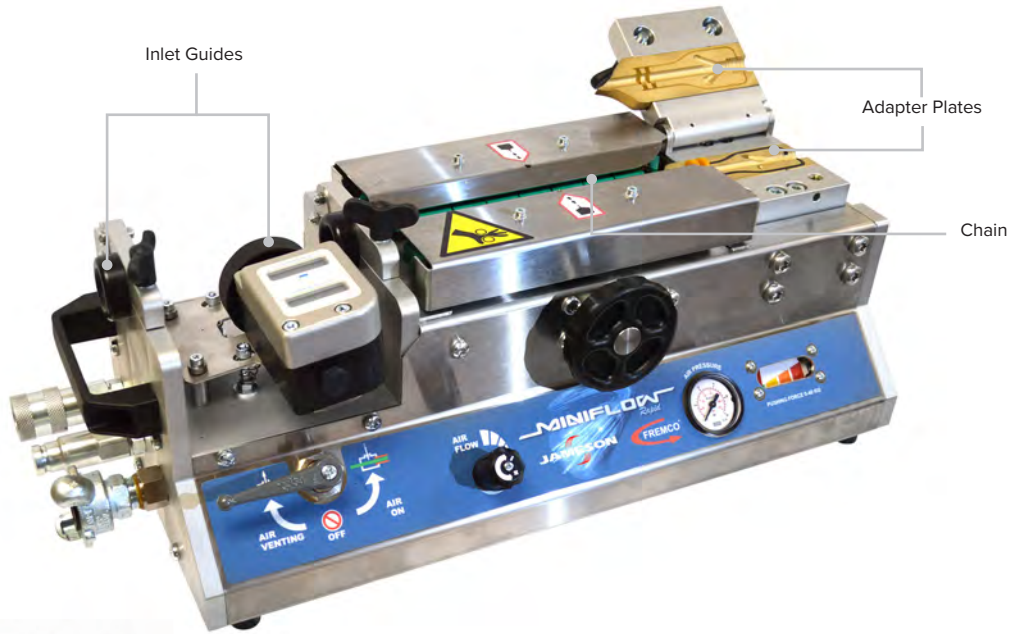
### MiniFlow RAPID Nylon Inlet Guides (1 Set)\*

Part Number	Inlet Dia.	Fiber Dia.
J103-10020	6.0 mm	4.0 - 5.0 mm
J103-10489	7.0 mm	5.0 - 6.0 mm
J103-10281	8.0 mm	6.0 - 7.0 mm
J103-10282	9.0 mm	7.0 - 8.0 mm
J103-120711001	10.0 mm	8.0 - 9.0 mm
J103-10307	11.0 mm	9.0 - 10.0 mm
J103-130821001	12.0 mm	10.0 - 11.0 mm
J103-121127005	13.0 mm	11.0 - 12.0 mm
J103-190326003	8.5 x 5.5 mm	8.0 x 4.5 mm (Flat Drop)

\* MiniFlow Requires Two (2) Nylon Inlet Guide Sets

# FIBER BLOWING MACHINES

## MINIFLOW RAPID - PARTS



Cable Seal Kit

Cable Seals

Replacement Drive Chain

**Cable Seals For Adapter Plates - To make blowing chamber as tight as possible**

### MiniFlow Cable Seals

Part Number	Description
J103-20611	MiniFlow RAPID Cable Seal Kit (75 pc.) - Storage Case with 4.0 - 12.0 mm Seals plus Blanks (5 each).

Select Seal Size(s) Nearest Intended Fiber Diameter

Part Number	Seal I.D.
J103-10236	Blank*
J103-10238	3.0 mm
J103-130118001	3.5 mm
J103-10239	4.0 mm*
J103-10240	4.5 mm*
J103-10241	5.0 mm*
J103-10242	5.5 mm*
J103-10243	6.0 mm*
J103-10244	6.5 mm*
J103-10245	7.0 mm*
J103-10283	7.5 mm*

Part Number	Seal I.D.
J103-10246	8.0 mm*
J103-10333	8.5 mm*
J103-10247	9.0 mm*
J103-130912001	9.5 mm
J103-10248	10.0 mm*
J103-121128001	11.0 mm*
J103-121128002	12.0 mm*
J103-190122001	Blank (Flat Drop)
J103-190326002	8.5 x 5.5 mm (Flat Drop)

\* Included in Cable Seal Kit J103-20611

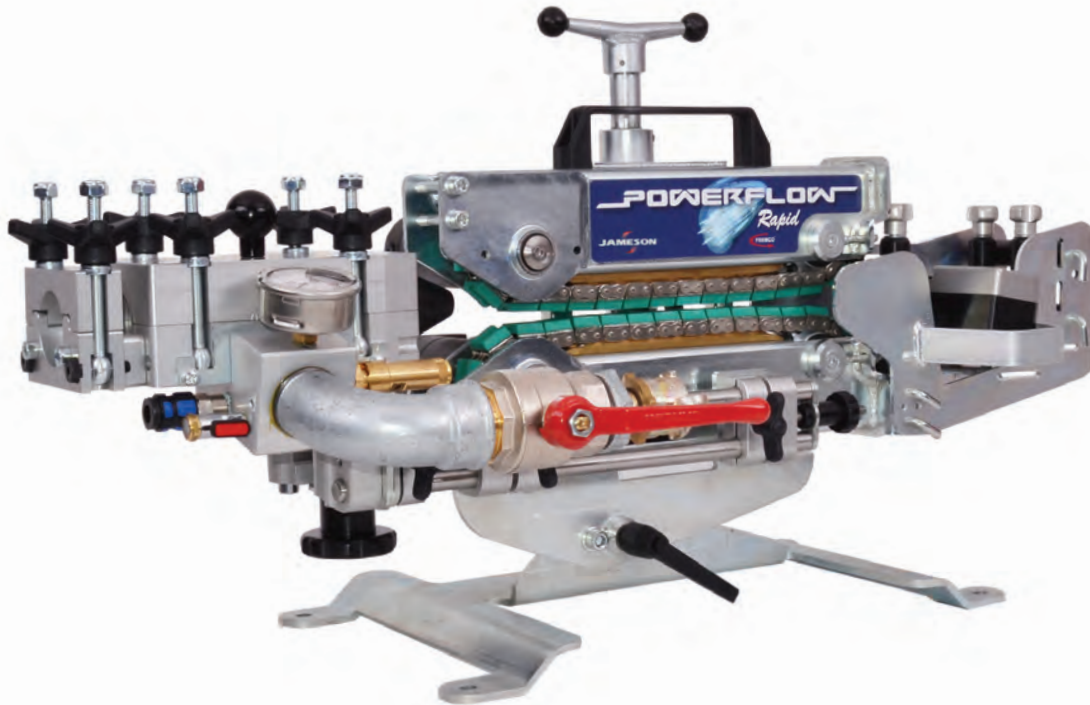
### Replacement Drive Chains and Support Rails (Order in Quantity of 2 each)

J103-20013	MiniFlow RAPID Drive Chain for 4.0 - 12.0 mm Fiber O.D.
J103-20353	MiniFlow RAPID Drive Chain for 3.0 - 8.0 mm Fiber O.D.
J103-12016	Chain Support Rail for all MiniFlow Machines



## POWERFLOW™ RAPID CABLE BLOWING MACHINE FOR BACKBONE WITH RAPID FEATURES

The PowerFlow RAPID is easy to operate and designed for rough conditions. This hydraulic machine can blow a wide variety of larger cables, fibers and ducts.



- Robust design constructed for reliable performance in tough environments
- Simple setup and user-friendly machine operation – Forward/Reverse drive modes
- Available water assisted floating provides maximum results suitable for larger cable or longer runs
- Tool free installation makes machine set up faster and easily adapts to various cable and duct sizes common to network and backbone installation
- Adjustable base tilts to accommodate duct entrance angle

### AVAILABLE MACHINE CONFIGURATIONS

Part Number	PowerFlow RAPID 8.0 - 25.0 mm Fiber O.D.	Junction Block FLEX	Inlet Guide w/ Digital Counter	Control Valve w/Man. Return	Cable Seal Kit	Hydraulic Hose Set (5 m)	Aluminum Storage Case	Hydraulic Power Pack (gas)
J101-PF-KIT1	✓	✓	✓	✓	✓	✓	✓	✓
J101-PF-KIT2	✓	✓	✓	✓	✓	✓		
J101-PF-KIT3	✓	✓	✓	✓	✓	✓	✓	
J101-41001	✓	✓	✓					

### Specifications

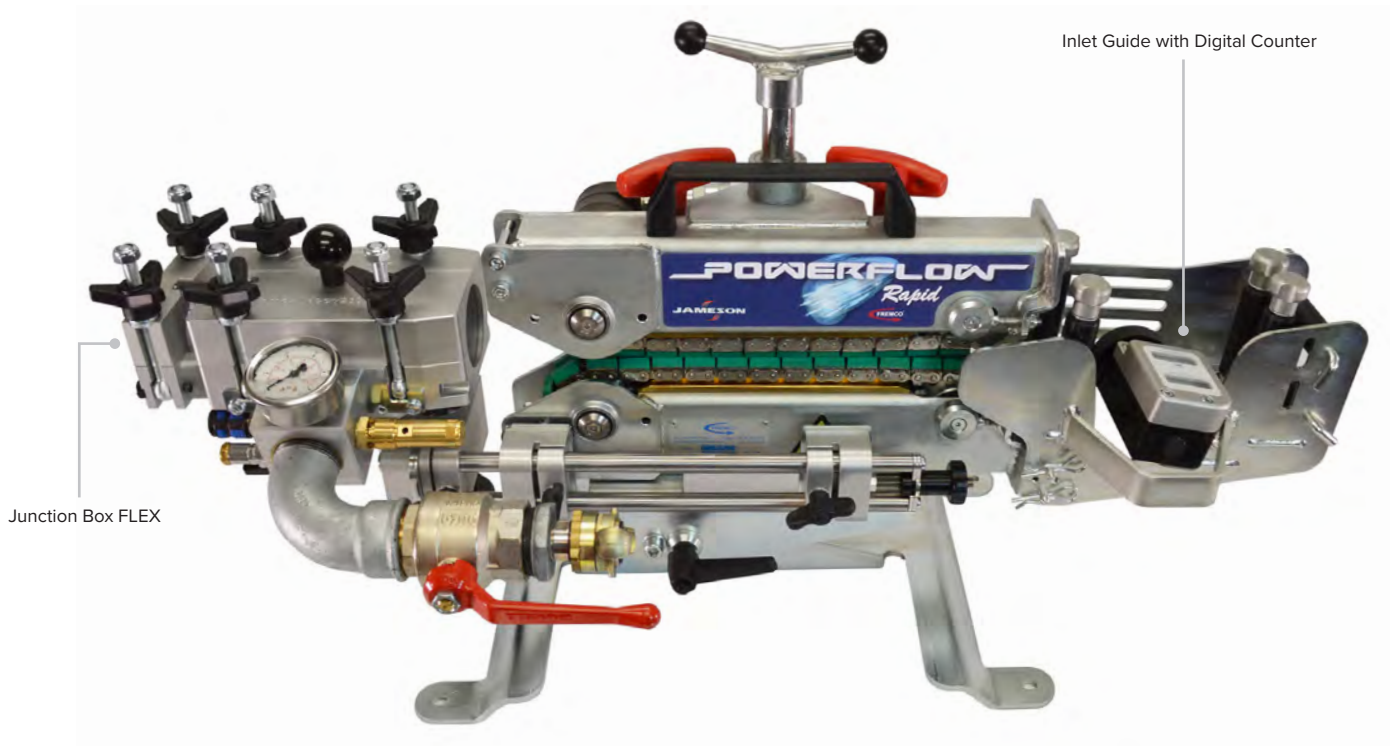
Application	Access Network / Backbone	Blowing Distance (Max.)	Up To 16,404 ft. (5000 m)
Fiber/Cable (OD)	5.5 - 25 mm	Floating Distance	Up To 32,808 ft. (10,000 m)
Duct Diameter (OD)	10 - 63 mm	Recommended Air Flow	282.5 - 423.8 cfm (8,000 - 12,000 l/min.)
Drive Power	Hydraulic	Recommended Air Pressure <sup>3</sup>	230 psi (16 bar air)
Install Speed <sup>2</sup> (Max.)	Up To 260 ft/min (80 m/min)	Dimensions (L x W x H)	37.4 x 15.7 x 19.7 in. (950 x 400 x 500 mm)
Pushing Force	0 - 276 lb (0 - 125 kg)	Weight	99 lbs (45 kg)

### Additional Equipment Needed To Run Machine:

- Hydraulic Power Pack & Control Valve
- Air Compressor
- After Cooler

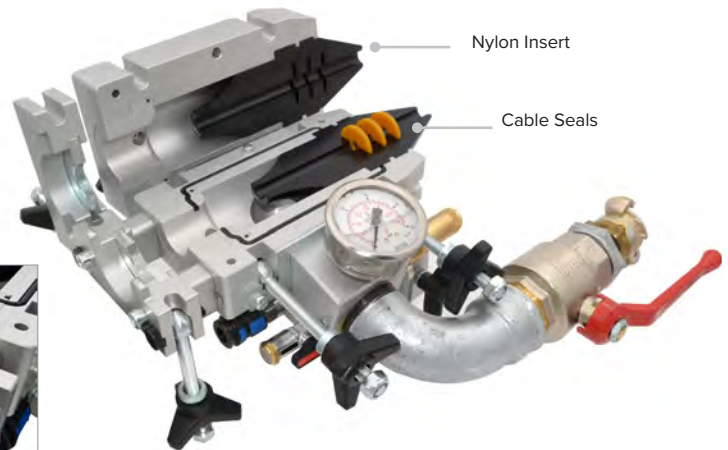
# FIBER BLOWING MACHINES

## POWERFLOW RAPID - PARTS



### New and Improved **TOOL FREE** set up

- Simple adjustment knobs allow perfect fiber alignment to FLEX block - 50% faster
- Quickly set-up FLEX block with clamping knobs - 80% faster
- Easy adjustment of inlet guide rollers with clamping knobs



## POWERFLOW RAPID - PARTS



Nylon Inserts



Duct Holder Inserts



Duct Adapter

### PowerFlow/MultiFlow RAPID Nylon Inserts (1 Set)

Part Number	Inlet Dia.	Fiber Dia.
J103-140611002	8.0 mm	5.5 - 7.0 mm
J103-10453	12.0 mm	8.0 - 11.0 mm
J103-10454	16.0 mm	12.0 - 15.0 mm
J103-10455	20.0 mm	16.0 - 19.0 mm
J103-10473	24.0 mm	20.0 - 23.0 mm
J103-10474	27.0 mm	24.0 - 25.0 mm

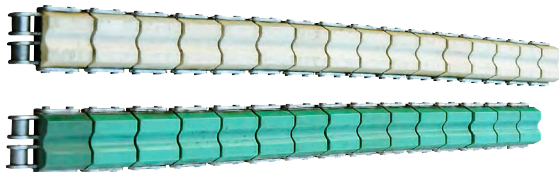
### Duct Holder and Adaptor Sets

J103-200210253	Duct Holder and Adaptor, 16mm
J103-200210254	Duct Holder and Adaptor, 18mm
J103-200210255	Duct Holder and Adaptor, 20mm
J103-200210257	Duct Holder and Adaptor, 26,3mm(3/4")
J103-200210259	Duct Holder and Adaptor, 33,3mm(1")
J103-200210261	Duct Holder and Adaptor, 42,2mm(1-1/4")
J103-200210262	Duct Holder and Adaptor, 48mm(1-1/2")

Custom Duct Holder and Adaptors Available Upon Request

### PowerFlow RAPID Drive Chains and Support Rails (Order in qty. of 2 each)

J103-20308	PowerFlow Drive Chain for 5.5 - 8.0 mm Fiber O.D.
J103-20069	PowerFlow Drive Chain for 8.0 - 16 mm Fiber O.D.
J103-200119002	PowerFlow Drive Chain for 14 - 25 mm Fiber O.D.
J103-10094	Chain Support Rail for all PowerFlow Machines
J103-130925002	Drive Chain Change Set



Optional/Replacement Drive Chains

### PowerFlow / MultiFlow RAPID Cable Seals

J103-20610

PowerFlow/MultiFlow RAPID Cable Seal Kit (105 pcs.) Five each size: 8.0-27.0 mm plus Blanks in plastic storage case.

Select seal size(s) nearest intended fiber diameter

Part Number	Seal I.D.
JKA2095	Blank *
J103-10204	5.0 mm
J103-10205	6.0 mm
J103-10206	7.0 mm
J103-10207	8.0 mm *
J103-10208	9.0 mm *
J103-10209	10.0 mm *
J103-10210	11.0 mm *
J103-10211	11.5 mm
J103-10212	12.0 mm *
J103-10213	13.0 mm *
J103-10214	13.5 mm
J103-10215	14.0 mm *
J103-10216	15.0 mm *
J103-10217	16.0 mm *
J103-10218	17.0 mm *
J103-10219	18.0 mm *
J103-10220	19.0 mm *
J103-10221	20.0 mm *
J103-10222	21.0 mm *
J103-10223	22.0 mm *
J103-10271	23.0 mm *
J103-10224	24.0 mm *
J103-10225	25.0 mm *
J103-10226	26.0 mm *
J103-10227	27.0 mm *

\* Included in Cable Seal J103-20610



Cable Seal Kit



Cable Seals

## MULTIFLOW RAPID

**MAXIMUM POWER & VERSATILITY!**

Maximum Power & Versatility!



### Cable blowing machine for backbone. Optimal for relining.

#### New and Improved TOOL-FREE Set-Up

- Versatile machine can install single cables or perform microduct relining
- Tool-free set-up – configure the machine quickly for any job – 80% faster
- Adjustment knobs perfectly align flex block with no tools needed – 50% faster
- Air or water can be used to assist cable installation – cable floating with water achieves maximum performance
- Easy adjustment of Inlet Guide rollers with clamping knobs

#### Additional Equipment Needed To Run Machine:

- Hydraulic Power Pack & Control Valve
- Air Compressor
- After Cooler

Specifications	
Application	Backbone
Fiber/Cable (OD)	5.5 - 32 mm
Duct Diameter (OD)	10 - 63 mm
Drive Power	Hydraulic
Install Speed (Max.)	260 ft/min (80 m/min)
Pushing Force	0 - 441 lb (0 - 200 kg)
Blowing Distance (Max.)	16,404 ft (5000 m)
Floating Distance	Up To 32,808 ft. (10,000 m)
Recommended Air Flow	282.5 - 423.8 cfm (8,000 - 12,000 l/min.)
Recommended Air Pressure	230 psi (16 bar air)
Dimensions L x W x H	41.3 x 15.7 x 19.7 in (1050 x 400 x 500 mm)
Weight	112.4 lb (51 kg)

#### AVAILABLE MACHINE CONFIGURATION

Part Number	MultiFlow RAPID 8.0 - 32.0 mm Fiber O.D.	Junction Block FLEX	Inlet Guide w/Digital Counter	Control Valve w/Man. Return	Cable Set Kit	Hydraulic Hose Set (5 m)	Aluminum Storage Case	Hydraulic Power Pack (gas)
J101-MUF-KIT1	✓	✓	✓	✓	✓	✓	✓	✓
J101-MUF-KIT2	✓	✓	✓	✓	✓	✓		
J101-MUF-KIT3	✓	✓	✓	✓	✓	✓	✓	
J101-41021	✓	✓	✓					

## MULTIFLOW RAPID SINGLE CABLE - PARTS



Nylon Inserts



Duct Holder Inserts



Duct Adapter



2" Duct Holder & Adapter



Cable Seal Kit

### PowerFlow/MultiFlow RAPID Nylon Inserts (1 Set)

Part Number	Inlet Dia.	Fiber Dia.
J103-140611002	8.0 mm	5.5 - 7.0 mm
J103-10453	12.0 mm	8.0 - 11.0 mm
J103-10454	16.0 mm	12.0 - 15.0 mm
J103-10455	20.0 mm	16.0 - 19.0 mm
J103-10473	24.0 mm	20.0 - 23.0 mm
J103-10474	27.0 mm	24.0 - 25.0 mm
J103-171004002	30.0 mm	27.0 - 29.0 mm

Custom Nylon Inserts Available Upon Request

### Duct Holder and Adaptor Sets

J103-200210253	Duct Holder and Adaptor, 16mm
J103-200210254	Duct Holder and Adaptor, 18mm
J103-200210255	Duct Holder and Adaptor, 20mm
J103-200210257	Duct Holder and Adaptor, 26,3mm(3/4")
J103-200210259	Duct Holder and Adaptor, 33,3mm(1")
J103-200210261	Duct Holder and Adaptor, 42,2mm(1-1/4")
J103-200210262	Duct Holder and Adaptor, 48mm(1-1/2")
J103-180820002	Duct Holder and Adaptor, 60mm(2")

Custom Duct Holder and Adaptors Available Upon Request



Cable Seals

### MultiFlow RAPID Only Cable Seals

Use with 30.0 mm Nylon Insert: J103-171004002

Part Number	Seal I.D.
J103-190128001	Blank
J103-131203001	20.0 mm
J103-131203002	21.0 mm
J103-131203003	22.0 mm
J103-190227001	23.0 mm
J103-190227002	24.0 mm
J103-10268	25.0 mm
J103-190227003	26.0 mm
J103-10263	27.0 mm
J103-190128002	28.0 mm
J103-190227004	29.0 mm

### PowerFlow / MultiFlow RAPID Cable Seals

J103-20610

PowerFlow/MultiFlow RAPID Cable Seal Kit (105 pcs.) Five each size: 8.0-27.0 mm plus Blanks in plastic storage case.

### Select seal size(s) nearest intended fiber diameter

Part Number	Seal I.D.
JKA2095	Blank *
J103-10204	5.0 mm
J103-10205	6.0 mm
J103-10206	7.0 mm
J103-10207	8.0 mm *
J103-10208	9.0 mm *
J103-10209	10.0 mm *
J103-10210	11.0 mm *
J103-10211	11.5 mm
J103-10212	12.0 mm *
J103-10213	13.0 mm *
J103-10214	13.5 mm
J103-10215	14.0 mm *
J103-10216	15.0 mm *
J103-10217	16.0 mm *
J103-10218	17.0 mm *
J103-10219	18.0 mm *
J103-10220	19.0 mm *
J103-10221	20.0 mm *
J103-10222	21.0 mm *
J103-10223	22.0 mm *
J103-10271	23.0 mm *
J103-10224	24.0 mm *
J103-10225	25.0 mm *
J103-10226	26.0 mm *
J103-10227	27.0 mm *

\* Included in Cable Seal J103-20610

# FIBER BLOWING MACHINES

## MULTIFLOW RAPID MICRODUCT RELINING - PARTS



### AVAILABLE MACHINE CONFIGURATION

Part Number	MultiFlow RAPID 8.0 - 32.0 mm Fiber O.D.	Junction Block FLEX	Inlet Guide w/Digital Counter	U-Bracket
J101-41002	✓	✓	✓	✓

### Inlet Guide U-Bracket

Used to convert MultiFlow RAPID from single fiber to Microduct relining

J103-11513	U-Bracket for Microduct Inlet Guides
------------	--------------------------------------

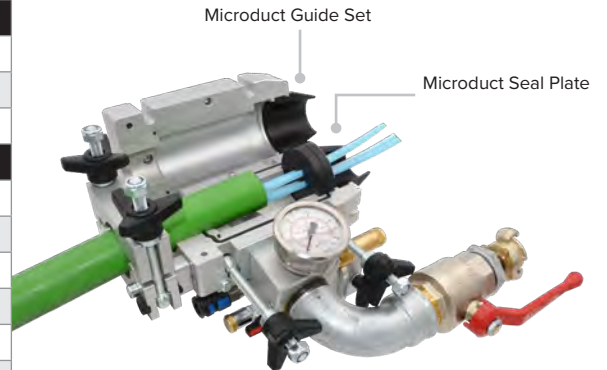
### Inlet Guide Blocks

J103-130624002	Inlet Guide Block, 7.0 mm x 10 Microduct
J103-10311	Inlet Guide Block, 7.0 mm x 13 Microduct
J103-10312	Inlet Guide Block, 7.0 mm x 15 Microduct
J103-150505002	Inlet Guide Block, 10.0 mm x 3 Microduct
J103-130830001	Inlet Guide Block, 10.0 mm x 5 Microduct
J103-10487	Inlet Guide Block, 10.0 mm x 7 Microduct
J103-121008002	Inlet Guide Block, 12.0 mm x 3 & 7 mm x 6 Microduct
J103-10480	Inlet Guide Block, 12.0 mm x 5 Microduct
J103-120412002	Inlet Guide Block, 12.0 mm x 6 Microduct
J103-10315	Inlet Guide Block, 12.0 mm x 7 Microduct
J103-10257	Inlet Guide Block, 12.0 mm x 10 Microduct
J103-10338	Inlet Guide Block, 14.0 mm x 4 Microduct
J103-141209001	Inlet Guide Block, 14.0 mm x 5 Microduct
J103-10483	Inlet Guide Block, 14.0 mm x 4 & 12 mm x 1 Microduct
J103-10313	Inlet Guide Block, 16.0 mm x 3 Microduct
J103-201107001	Inlet Guide Block, 16.0 mm x 5 Microduct

Custom Inlet Guide Blocks Available Upon Request

## MULTIFLOW RAPID MICRODUCT RELINING - PARTS

Guide Set	
J103-10327	Microduct Guide Set
J103-201007003	Microduct Guide Set Wide
<b>Duct Holder and Adaptor Sets</b>	
J103-200210253	Duct Holder and Adaptor, 16mm
J103-200210254	Duct Holder and Adaptor, 18mm
J103-200210255	Duct Holder and Adaptor, 20mm
J103-200210257	Duct Holder and Adaptor, 26,3mm(3/4")
J103-200210259	Duct Holder and Adaptor, 33,3mm(1")
J103-200210261	Duct Holder and Adaptor, 42,2mm(1-1/4")
J103-200210262	Duct Holder and Adaptor, 48mm(1-1/2")
J103-180820002	Duct Holder and Adaptor, 60mm(2")
Custom Duct Holder and Adaptor Set Available Upon Request	



Microduct Relining Seal Plates	
J103-120319001	Seal Plate, 7.0 mm x 7 Microduct
J103-10319	Seal Plate, 7.0 mm x 7 & 10.0 mm x 3 Microduct
J103-130624001	Seal Plate, 7.0 mm x 10 Microduct
J103-10321	Seal Plate, 7.0 mm x 10 & 10.0 mm x 1 Microduct
J103-10252	Seal Plate, 7.0 mm x 13 Microduct
J103-10253	Seal Plate, 7.0 mm x 15 Microduct
J103-10442	Seal Plate, 7.0 mm x 19 Microduct
J103-111229001	Seal Plate, 8.0 mm x 7 Microduct
J103-150505001	Seal Plate, 10.0 mm x 3 Microduct
J103-10316	Seal Plate, 10.0 mm x 3 & 12.0 mm x 1 Microduct
J103-10254	Seal Plate, 10.0 mm x 5 Microduct
J103-10255	Seal Plate, 10.0 mm x 7 Microduct
J103-121008001	Seal Plate, 12.0 mm x 3 & 7.0 mm x 6 Microduct
J103-10318	Seal Plate, 12.0 mm x 5 Microduct
J103-120412001	Seal Plate, 12 mm x 6 Microduct
J103-10320	Seal Plate, 12.0 mm x 7 Microduct
J103-10443	Seal Plate, 12.0 mm x 8 Microduct
J103-10336	Seal Plate, 14.0 mm x 4 Microduct
J103-10482	Seal Plate, 14 mm x 4 & 12.0 mm x 1 Microduct
J103-121022002	Seal Plate, 14.0 mm x 5 Microduct
J103-10317	Seal Plate, 16.0 mm x 3 Microduct
J103-201107002	Seal Plate, 16.0 mm x 5 Microduct
Custom Seal Plates Available Upon Request	



Duct Holder Inserts

Duct Adapter

Seal Plate Plugs	
J103-10324	Seal Plate Plugs, 7.0 mm
J103-111227003	Seal Plate Plugs, 8.0 mm
J103-10150	Seal Plate Plugs, 10.0 mm
J103-10149	Seal Plate Plugs, 12.0 mm
J103-10481	Seal Plate Plugs, 14.0 mm
J103-10323	Seal Plate Plugs, 16.0 mm



Microduct Seal Plate

Seal Plate Plugs

# FIBER BLOWING MACHINES

## MULTIFLOW RAPID MICRODUCT RELINING - PARTS



Relining Plugs For Pressurizing Microduct

Fill Valve For Pressurizing Microduct

### Microduct Relining Plugs (I.D./O.D)

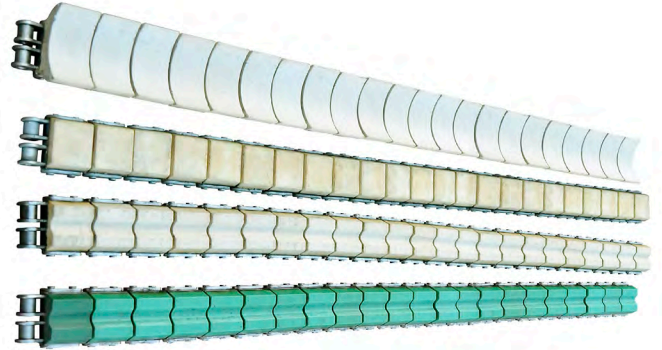
JK7	Relining Plug, Aluminum, 5.5/7.0 mm Microduct
JK10	Relining Plug, Aluminum, 8.0/10.0 mm Microduct
JK12	Relining Plug, Aluminum, 10.0/12.0 mm Microduct
JK14	Relining Plug, Aluminum, 10.0/14.0 mm Microduct
JK16	Relining Plug, Aluminum, 12.0/16.0 mm Microduct

### Microduct Relining Fill Valve

J103-10044	Fill Valve, 7.0 mm Microduct
J103-10045	Fill Valve, 10.0 mm Microduct
J103-10046	Fill Valve, 12.0 mm Microduct
J103-120131003	Fill Valve, 14.0 mm Microduct
J103-10047	Fill Valve, 16.0 mm Microduct

### Replacement Drive Chains and Support Rails (Order in qty. of 2 each)

J103-20067	MultiFlow Drive Chain for Microduct - Wide Profile
J103-20068	MultiFlow Drive Chain for Microduct - Narrow Profile
J103-200119001	MultiFlow Drive Chain for 14.0 - 32.0 mm Fiber O.D.
J103-20070	MultiFlow Drive Chain for 8.0 - 16.0 mm Fiber O.D.
J103-20355	MultiFlow Drive Chain for 5.5 - 8.0 mm Fiber O.D.
J103-10168	Chain Support Rail for all MultiFlow Machines
J103-130925002	Drive Chain Change Set
J103-20279	Flat Chain for Microduct
J103-20061001	Low-Wide Chain for Microduct





## MULTIFLOW RAPID CHAIN CONFIGURATIONS



1

**Top chain: J103-20011901**  
MultiFlow RAPID chain for  
14.0 - 32.0 mm Fiber O.D.

**Bottom chain: J103-200119001**  
MultiFlow RAPID chain for  
8.0 - 16.0 mm Fiber O.D.



2

**MultiFlow RAPID Relining  
for Multiple Microducts  
(Ex. 2 x 10 mm Duct)**

**Top chain: J103-20279**  
Flat Chain for Microduct

**Bottom chain: J103-20067**  
MultiFlow RAPID chain for  
Microduct - Wide Profile



3

**MultiFlow RAPID Relining  
for Multiple Microducts  
(Ex. 3 x 10 mm Duct)**

**Top chain: J103-20279**  
Flat Chain for Microduct

**Bottom chain: J103-20067**  
MultiFlow RAPID chain for  
Microduct - Wide Profile



4

**MultiFlow RAPID Relining  
for Multiple Microducts  
(Ex. 4 x 10 mm Duct)**

**Top chain: J103-20068**  
MultiFlow RAPID chain for  
Microduct - Narrow Profile

**Bottom chain: J103-20067**  
MultiFlow RAPID chain for  
Microduct - Wide Profile



5

**MultiFlow RAPID Relining  
for Multiple Microducts  
(Ex. 5 x 10 mm Duct)**

**Top chain: J103-20067**  
MultiFlow RAPID chain for  
Microduct - Wide Profile

**Bottom chain: J103-20067**  
MultiFlow RAPID chain for  
Microduct - Wide Profile



6

**MultiFlow RAPID Relining  
for Multiple Microducts  
(Ex. 6 x 10 mm Duct)**

**Top chain: J103-20067**  
MultiFlow RAPID chain for  
Microduct - Wide Profile

**Bottom chain: J103-20067**  
MultiFlow RAPID chain for  
Microduct - Wide Profile

# FIBER BLOWING MACHINES

## FIBER BLOWING ACCESSORIES



**Cable Mouse**

- Assists cable blowing performance
- For use with single cable in ducts up to 50 mm
- Fits cable diameters up to 14 mm
- Silicone seals required in quantity of 4 pcs.



**Calibration Probe**

- Use to proof 32, 40, and 50 mm ducts.
- Send sonde with air pressure
- Track blocked sonde with your 33 kHz receiver

### Fiber Blowing Accessories

J103-10037	Cable Mouse - Up to 12mm Fiber O.D., for PowerFlow and MultiFlow
J103-10038	Cable Mouse - Up to 14mm Fiber O.D., for PowerFlow and MultiFlow
J103-10490	Calibration Probe (32-50mm Duct O.D.), for PowerFlow and MultiFlow
JKA1079-28	Silicone Seal (28mm), for Cable Mouse/Calibration Probe
JKA1079-32	Silicone Seal (32mm), for Cable Mouse/Calibration Probe
JKA1079-36	Silicone Seal (36mm), for Cable Mouse/Calibration Probe
JKA1079-42	Silicone Seal (42mm), for Cable Mouse/Calibration Probe
JKA1090-42	Support Washer for Silicone Seal (42mm)



**Cable End Caps**

**Cable End Caps - Screw on end of cable to help reduce friction & protect cable end during blowing process.**

JK02S	Cable End Cap, Brass (2.5mm O.D.) for 2.0mm Cable
JK03S	Cable End Cap, Brass (4.0mm O.D.) for 3.0mm Cable
JK04S	Cable End Cap, Brass (4.5mm O.D.) for 4.0mm Cable
JK05S	Cable End Cap, Brass (5.5mm O.D.) for 5.0mm Cable
JK06S	Cable End Cap, Brass (6.5mm O.D.) for 6.0mm Cable
JK07S	Cable End Cap, Brass (7.5mm O.D.) for 7.0mm Cable
JK08S	Cable End Cap, Brass (8.5mm O.D.) for 8.0mm Cable
JK09S	Cable End Cap, Brass (9.5mm O.D.) for 9.0mm Cable
JK10S	Cable End Cap, Brass (10.5mm O.D.) for 10.0mm Cable
JK11S	Cable End Cap, Brass (11.5mm O.D.) for 11.0mm Cable
JK12S	Cable End Cap, Brass (12.5mm O.D.) for 12.0mm Cable
JK13S	Cable End Cap, Brass (13.5mm O.D.) for 13.0mm Cable
JK14S	Cable End Cap, Brass (14.5mm O.D.) for 14.0mm Cable

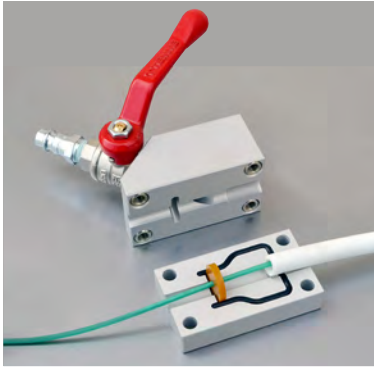


**Fiber Blowing Sponges**

### Fiber Blowing Sponges

For Proofing and Lubricating Duct

Part Number	Sponge Dia.	Inner Duct Dia.	Pack Size
J103-2005060	5.0 mm	2.5 - 4.0 mm	100 pcs.
J103-2008060	8.0 mm	4.0 - 6.0 mm	100 pcs.
J103-2012060	12.0 mm	6.0 - 9.0 mm	100 pcs.
J103-2018060	18.0 mm	9.0 - 14.0 mm	50 pcs.
J103-2028060	28.0 mm	14.0 - 21.0 mm	20 pcs.
J103-2045060	45.0 mm	21.0 - 35.0 mm	10 pcs.
J103-2050060	50.0 mm	25.0 - 45.0 mm	10 pcs.
J103-2060060	60.0 mm	30.0 - 50.0 mm	10 pcs.



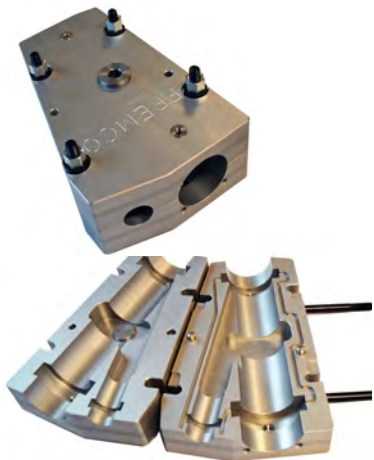
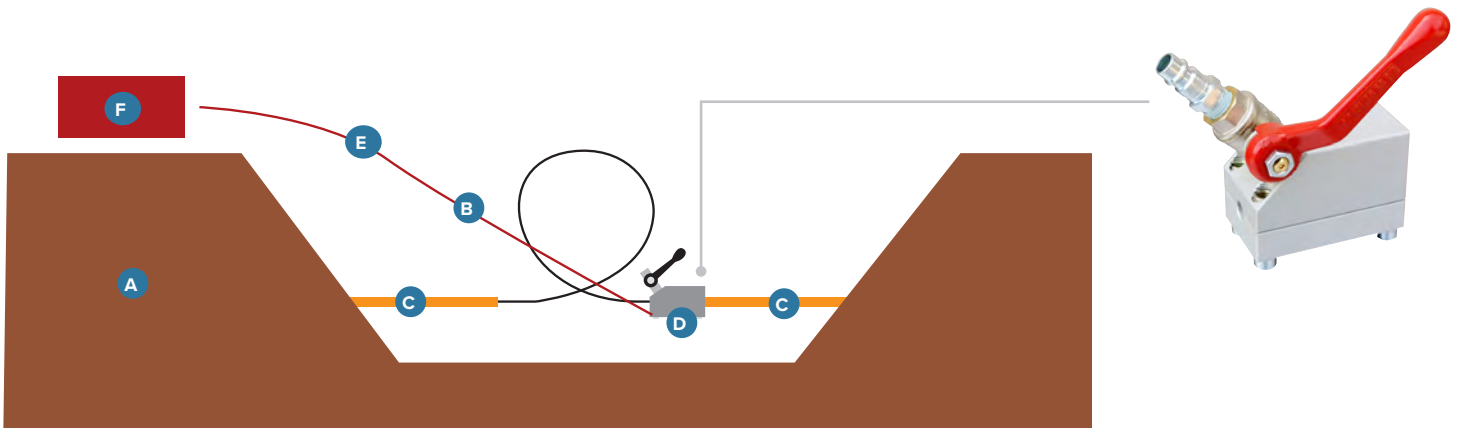
### Mini Junction Blowing Block

Mini Junction Blowing Block can also be used to install fiber short distances using air only. This is useful in areas too tight for a regular fiber blowing machine.

- A Ground
- B Cable with loop after blown in both directions
- C Microduct
- D Mini blowing junction block
- E Air Hose
- F Compressed Air Source

#### Mini Junction Blowing Blocks

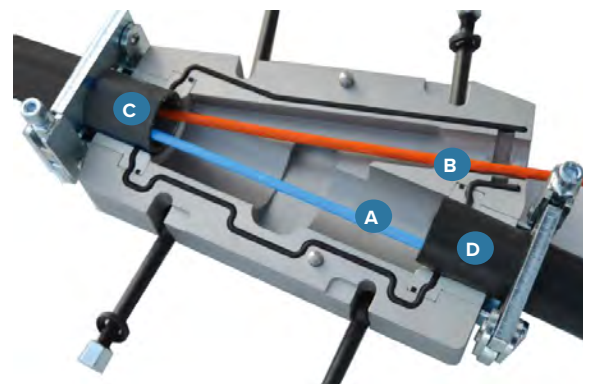
J103-180314001	Mini Junction Blowing Block for 12mm Duct O.D., (2) 12" x 12mm Duct, (1 ea.) 12 to 10mm and 12 to 8mm Duct Reducers, (2 ea.) MiniFlow Cable Seals 3mm - 7.5mm Fiber O.D., (1) Allen Key
----------------	---



### Y-Block Flex

Allows overblowing new fiber into existing duct containing previously installed fiber. Accepts all PowerFlow and MultiFlow Adapters and Duct Collets for 14.0mm O.D. to 2" SDR 11 Duct. Y-Inlet utilizes PowerFlow/MultiFlow cable seals. See Power Flow/MultiFlow sections for required Adapters, Duct Collets, and Cable Seals.

- A New Fiber
- B Existing Fiber
- C Existing Duct
- D Supply Duct



#### Y-Block FLEX

J103-180726005	Y-Block FLEX for overblowing new fiber into existing duct.
----------------	--

# FIBER BLOWING MACHINES

## FIBER BLOWING ACCESSORIES



Hydraulic Power Pack



Hydraulic Control Valve



Air Hose With ChicagoType Couplings



Hydraulic Extension Hose



Air Hose With Quick Connect Couplings



Lubrication



Lubrication Pump Kit

### Hydraulic Pumps & Control Valves

J101-10102	Hydraulic Power Pack (Honda 5.5HP 4-Stroke OHV Gas Engine)
JHPP6	Hydraulic Power Pack (Honda 6.5HP, 4.5 GPM)
JHPP13	Hydraulic Power Pack (Honda 13HP, 5 - 8 GPM)
J103-150903001	Control Valve (Manual Return-to-Center) with Hoses, 5 ft. (1.5m) each side
J103-10041	Control Valve (Spring Return-to-Center) with Hoses, 5 ft. (1.5m) each side

### Hydraulic Extension Hoses

J103-130208001	Hydraulic Extension Hose 15ft. (5m), Set of 2 with Couplings
J103-20258	Hydraulic Extension Hose 45ft. (15m), Set of 2 with Couplings

### Air / Water Hoses

J103-130529001	Flexible Hose 3/4" x 15' (5m) - 290 psi (20 bar) with Chicago-type Couplings
J103-130814001	Flexible Hose 3/4" x 30' (10m) - 290 psi (20 bar) with Chicago-type Couplings
J103-130529002	Flexible Hose 3/4" x 45' (15m) - 290 psi (20 bar) with Chicago-type Couplings
J103-30155	Flexible Air Hose 3/8" x 30' (10m) with 1/4" Quick-Connect Couplings

### Blowing Lubrication

J101-30530	FlowLub 5000 for MicroFlow/MiniFlow, 1 Qt.
J101-30531	FlowLub 5000 for MicroFlow/MiniFlow, Case of 12 (1 Qt. Bottles)
J101-30540	FlowLub 2000 for PowerFlow/MultiFlow, 1 Qt.
J101-30541	FlowLub 2000 for PowerFlow/MultiFlow, Case of 12 (1 Qt. Bottles)
J103-20190927001	Lubrication Pump Kit



### After Coolers

JAC-245	Aftercooler for MiniFlow (245CFM)
JAC-540	Aftercooler for PowerFlow/MultiFlow (540CFM)

### After Cooler

Cools and dries air from the compressor to extend machine life and improve blowing distance. Install between compressor and blowing machine. Requires no power input.

## FIBER BLOWING ACCESSORIES



### TRANSPORT CASES

Heavy duty case protects machine and accessories during transport. On the jobsite, case converts into stable workstation for machine.

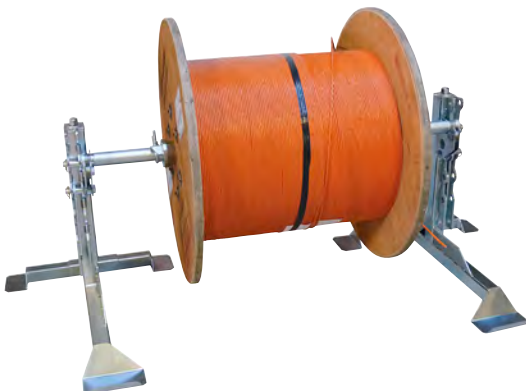
Part Number	Description
J103-MF-CASE	Aluminum Transport Case for MiniFlow
J103-PFMF-CASE	Aluminum Transport Case for PowerFlow/Multiflow



### FIBER BLOWING TROLLEYS

Features mounting for hydraulic control valve, folding handle and foam-filled rubber wheels.

Part Number	Description
J103- MIF-Trolley	MiniFlow Trolley
J103-PFMF-Trolley	PowerFlow/MultiFlow Trolley



### REEL STAND

Adjustable Reel Stand with lifting jacks is made of galvanized steel, with a robust hand-operated mechanical lifting system. Lifting arms offer five-position adjustable shaft supports; detachable frame. Ensures smooth and easy feed of cable from the drum to improve blowing length.

Part Number	Description
J101-20011	Adjustable Reel Stand (Set of 2) with Axle, 20" - 70" (500 - 1800mm) Reel Dia., 3,500 lb. (1600kg) Max. Load

## POWERFLOW/MULTIFLOW GEN 1 - REPLACEMENT PARTS

PowerFlow/MultiFlow Inlet Guides	
J103-10064	Standard Inlet Guide
J103-130917001	Inlet Guide with Digital Counter
PowerFlow/MultiFlow Junction Blocks & Bracket	
J103-130424001	Junction Block FLEX
J103-180816002	Junction Block - Fixed 2" SDR 11 Duct (2.38" O.D.)
J103-140526001	Junction Block - Fixed 2" SiDR 11.5 Duct (2.45" O.D.)
J103-10478	Junction Block Bracket
PowerFlow/MultiFlow Adapters & Duct Collets	
J103-141209003	Adapter 14.0 mm Duct O.D.
J103-141209002	Adapter 16.0 mm Duct O.D.
J103-130424003	Adapter & Duct Collet - 20.0 mm Duct O.D.
J103-130415001	Adapter & Duct Collet - 25.0 mm Duct O.D.
J103-180527001	Adapter & Duct Collet - 3/4" SDR 11 Duct (1.05" O.D.)
J103-180527002	Adapter & Duct Collet - 1" SDR 11 Duct (1.32" O.D.)
J103-130424004	Adapter & Duct Collet - 1-1/4" SDR 11 Duct (1.64" O.D.)
J103-160627007	Adapter & Duct Collet - 1-1/2" SDR 11 Duct (1.91" O.D.)
J103-180820002	Adapter & Duct Collet - 2" SDR 11 Duct (2.38" O.D.)
Custom Duct Collet and Adapters Available Upon Request	



WHEREVER THE JOB TAKES YOU,  
**COUNT ON JAMESON™**



**JAMESONTOOLS.COM**

800.346.1956

PD\_2022-30  
REV 08/2022